

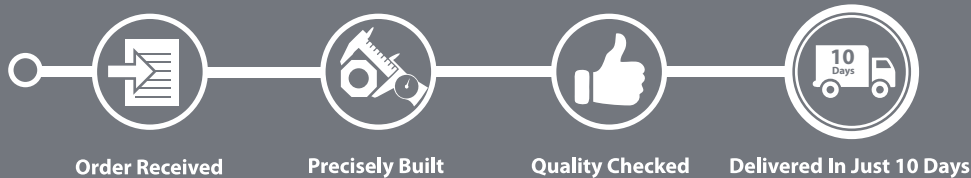
A beautifully crafted Bariatric chair delivered in just 10 days.*



Meticulously Designed Bariatric Seating

Our Design and Development team have created a perfectly crafted bariatric chair that caters for patient care, safe handling and dignity, alongside the safety of both patient and carer which are fundamental to modern healthcare.

The chair combines exceptional functionality and high carrying capacity to support the treatment of bariatric patients.



Battery Back-up System

Our Bariatric chair has an integrated Battery Back-up System for complete safety during a shortage of power supply to it's environment.



Waterproof Fabric

Our waterproof fabrics combine maximum abrasion resistance with a specially engineered low friction surface which minimises the risk of shear.



Weight Tested

The Bariatric chair has an impressive 40 Stone (254kg) weight capacity, whilst offering a 25 Stone (158kg) leg lift system.

Flat Low Friction back design to reduce the risk of shear

Complete Vapour Permeable Removable seat wrap and cushions

Robust and supportive arms for optimum user handling

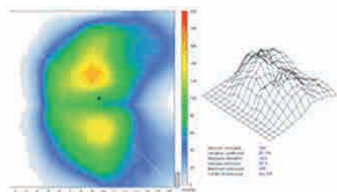
25 stone (158kg) leg lift capacity



Synchronised Motor System

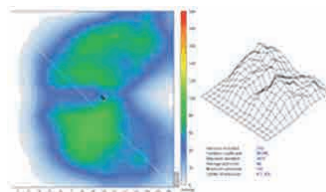
Our 10 day Bariatric chair comes complete with a 40 Stone 4 motor synchronised system with reset functions. This mechanism is a solid performance action and has been specifically designed for the bariatric market.

Reflexion Foam Pack



Conventional Foam Seat

The conventional seat cushion does not adequately support, or disperse, weight effectively. The image to the left highlights a large proportion of the buttocks, which is the area at greatest risk.



Reflexion Foam Seat

In complete contrast, the Reflexion seat cushion shows a substantial reduction in interface pressure around the critical area of the buttocks and is completely devoid of any pressure contact areas.

Size Matrix

Sizes shown in inches

| | | | |
|-------------|----|---|----|
| Seat Height | 19 | → | 22 |
| Seat Width | 25 | → | 31 |
| Seat Depth | 18 | → | 24 |
| Back Height | 28 | → | 32 |

Images shown in:



Black Dartex Stretch



Panaz Highland Mink



*This offer applies to chairs ordered in the Black Dartex Stretch and Panaz Highland Mink fabric only. Other fabric choices are available but will fall outside of the 10day delivery period. Full Terms and Conditions are available on request.